



, □□)6- +) □, □3 □
)□ 6)

LI □YOW□YMY □□□□ □VPS □ S□ E W□ WE G□
 collaboratively re-examining and redefining 'heritage' with
 I VMI RXV□CENRN□K E□□ S X□R-H□E□□□□□□□□□□□□
 E G□□□□□□□□□□□□□□□□□□□□□□□□□□□□□□
 X□□□□□□□□□□□□□□□□□□□□□□□□□□□□□□
 MEH UYEX □□□□□□□□□□□□□□□□□□□□□□□□
 REFI P□HE □□□□□□□□□□□□□□□□□□□□□□□□
 X□□□□□□□□□□□□□□□□□□□□□□□□□□□□□□
 EYEF□□□□□□□□□□□□□□□□□□□□□□□□□□□□
 EG□□□□□□□□□□□□□□□□□□□□□□□□□□□□□□
 LERH □□□□□□□□□□□□□□□□□□□□□□□□□□□□
 I VMI RXV□□□□□□□□□□□□□□□□□□□□□□□□□□
 X□□□□□□□□□□□□□□□□□□□□□□□□□□□□□□

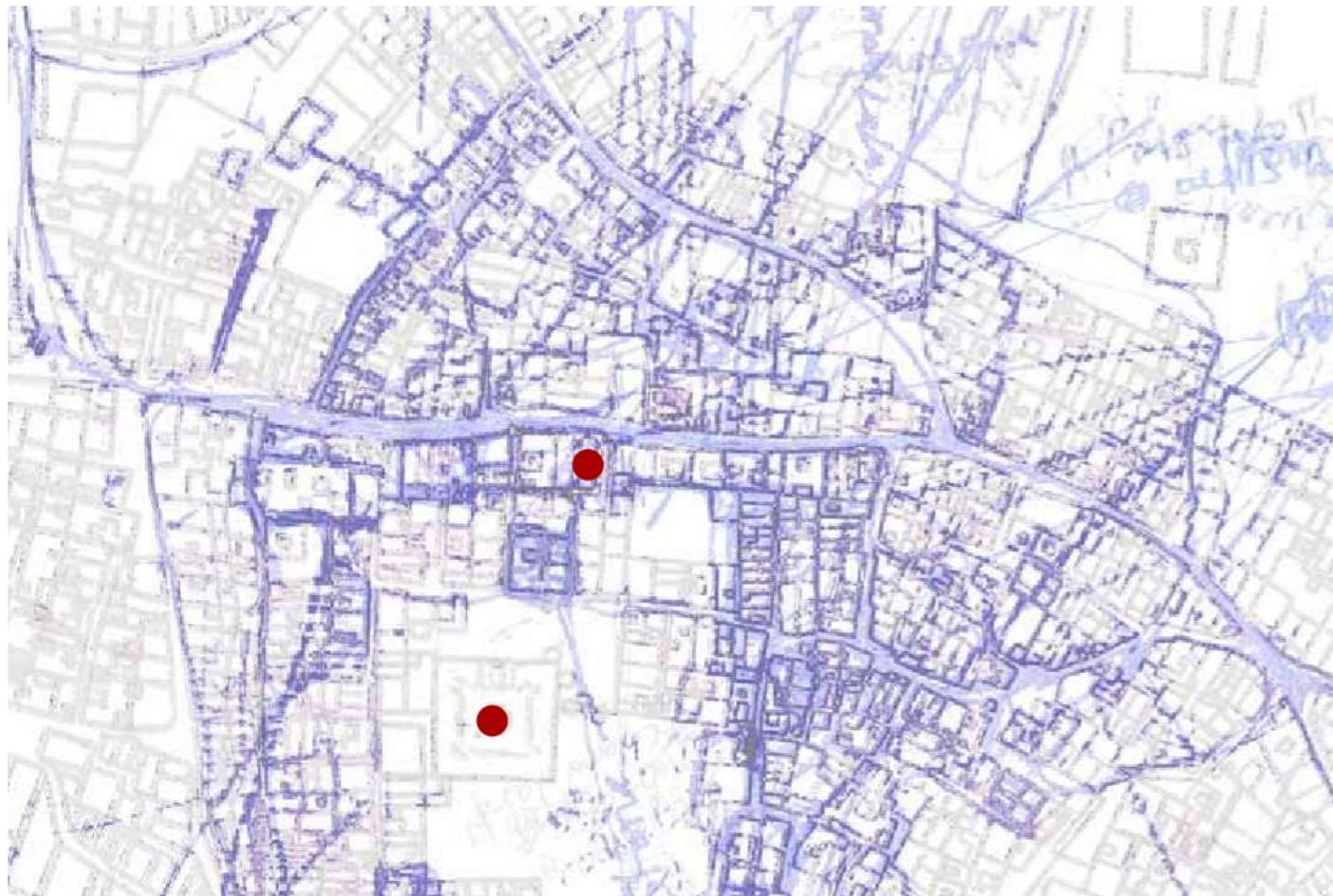
LI □YOW□SYM□□□□□□□□□□□□□□□□□□□□□□□□□□□□□□
 FRALX HE □□□□□□□□□□□□□□□□□□□□□□□□□□□□□□
 SRY I RXE□□□□□□□□□□□□□□□□□□□□□□□□□□□□□□
 difficult for most residents to complete).



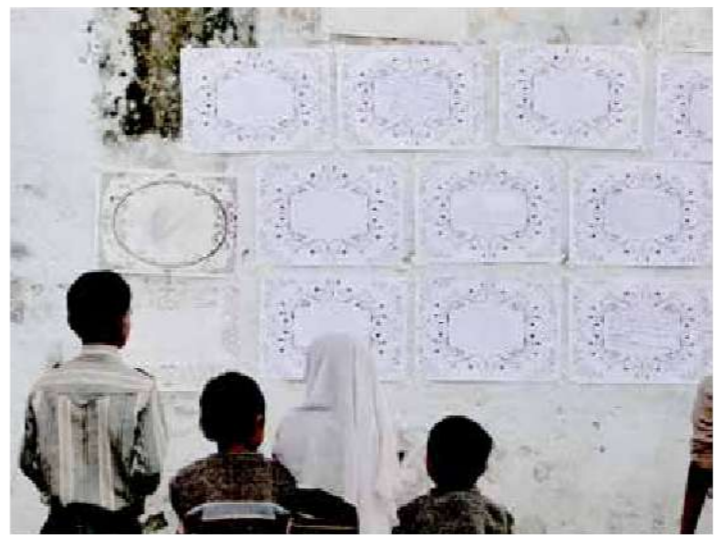
/ , □□) | □3 □3 □6
 6 ,)0□3 +6 (□□□□ 6) □□)2 6) □3 6□6 2 □2 (□6) + -3 2 0□) 00)2) □2 (- □



• Indicates 'plaque' location



— Sites of importance to residents • Registered Monuments



'Plaques' storytelling game



Planning 'heritage trails' with residents



Conservation skills workshops with Raj Mistry

) 0 □ () □ 2 - 2 +

P □ □ P □ □ □ □ □ P □
P □ □ P □ □ □ P □ □ P □
specificity and responsive to the natural environment

Although tourism can be beneficial, the view that
I G TXSREPEI CLM GY I □□□□□□□□ □□□□□□□□
I VMI RXVEI CEYMSI □□□□□□□□ □□□□□□□□
X SYLDSY MV □□□□□□ □□□□□□□□ □□□□□□□□
-XS X R □ I ERV □□□□□□ □□□□□□□□ □□□□□□□□
I R M S R I RXE □□□□□□ □□□□□□ □□□□□□□□
E I □□□□□□ □□□□□□ □□□□□□ □□□□□□□□
2 S X S R P □□□□□□ □□□□□□ □□□□□□□□
S □□□□□□ □□□□□□ □□□□□□ □□□□□□□□
X □□□□□□ □□□□□□ □□□□□□ □□□□□□□□
of self-building. Taking into account new conflicts created by
T S T Y E X S R I R □□□□□□ □□□□□□ □□□□□□□□
I K Y E X S R V □□□□□□ □□□□□□ □□□□□□□□
E V M B C E P E I E R I V M E S Y X □□□□□□ □□□□□□□□
T E G X □□□□

L SYL □□□□ □□□□□□ □□□□□□ □□□□□□□□
H M □□□□ □□□□□□ □□□□□□ □□□□□□□□
S □□□□□□ □□□□□□ □□□□□□ □□□□□□□□
I H □□□□□□ □□□□□□ □□□□□□ □□□□□□□□
I S M V E R □□□□□□ □□□□□□ □□□□□□□□
K I R I E X S R I □□□□□□ □□□□□□ □□□□□□□□
V V M E R I H E □□□□□□ □□□□□□ □□□□□□□□
E P Y I □□□□□□ □□□□□□ □□□□□□ □□□□□□□□
Y F E R S I H □□□□□□ □□□□□□ □□□□□□□□
E G S S H E X R K E M I V M □□

-R □□□□ □□□□ □□□□ □□□□ □□□□ □□□□ □□□□
H S X M S □□□□ □□□□ □□□□ □□□□ □□□□ □□□□
T M R I H E S Y R H □□□□ □□□□ □□□□ □□□□ □□□□
E R □□□□ □□□□ □□□□ □□□□ □□□□ □□□□ □□□□
X I □□□□ □□□□ □□□□ □□□□ □□□□ □□□□ □□□□
S R Y I R X E P S □□□□ □□□□ □□□□ □□□□ □□□□
X I E X R I H E M □□□□ □□□□ □□□□ □□□□ □□□□
therefore very difficult to get planning permission to repair
X I □□□□ □□□□ □□□□ □□□□ □□□□ □□□□ □□□□
S W A Y I □□□□ □□□□ □□□□ □□□□ □□□□ □□□□

L I □□□□ □□□□ □□□□ □□□□ □□□□ □□□□ □□□□
E M E R N E R H □□□□ □□□□ □□□□ □□□□ □□□□ □□□□
groups labelled as having 'historic significance' in their
E I E □□□□ □□□□ □□□□ □□□□ □□□□ □□□□ □□□□
I K M □□□□ □□□□ □□□□ □□□□ □□□□ □□□□ □□□□
C E I H S □□□□ □□□□ □□□□ □□□□ □□□□ □□□□

/ , □□) | □□ □□ □□ □□
6 ,) 0 □□ + 6 (□□□□ 6) □□) 2 6) □□ 6 □□ 6 2 □□ 2 (□□) + - 3 2 0 □) 0 0) 2) □□ (- □



Above: Section through Buksh House during preparations for the museum event

Principle 6. Share knowledge, promote discussion, reflection and

□ □ P F □ □ □ □ □ □ F

4E XOTERXAZI I □ G YX HOS DLI □ SINGXS I □ S □ E VZ
 YWAKEIORS FEPVMP GYSR □ CLRYM I ERHEI ELY I VZ
 XS ECLM I □ X □ GYVMIX □ I EVV I HEKEMVX SK ETLM □
 VEP □ V GPEMI VV ERHEI TXLS □ RKEI I RY □ F EGAK □
 XI □ KY I RX □ EX V GPEMI VV V GPE □ SHYGM I □ I □
 XMI DLI □ FEXRVMTEI X I I R □ WE GLI ERHTE XOTERXAZI
 H I B TI HOS □ LEXS □ BH MV ERHEYHMRG □ S EZE I □
 G PEF S EX VTE XOTERXAZI □ E R □ L SYKL □ EXRERH □
 T EGAS □ G PEF S EX VZENI H □ V V L X □ DS V V V P □ SYXS I VZ
 S □ RKEK □ M □ DLI □ S TRES □ I MEK □ M □ DLI □ EP □
 G RVXEM V ERHSITTS XRYM V □ VY □ G RHYR VZ

LI □ SINGEGX HEMELS Y □ LI I TE XOTERXAZI Y □
 RI K XBX DLI □ H V V X I R X S DLI □ M V K E □ CL M GY I □
 X □ SYKL □ M X Y I □ I □ EGK E P □ V V K E R H E M V V R □ LI V □
 EGSR VZ TS V H E R E □ CL M GY E P S H □ LI I □ I ER V K □ EVZ
 F Y V K □ T □ S DLI □ S TSK ETL □ L V V K R □ ERHEI X V P E S R □
 S □ E G L E Y M V K □

I G E Y W □ I □ I □ B Y R K S □ F E R R V K □ M V R E S □
 T I □ E R I R X □ T E M V D L I □ E T T R E X I R □ E V E I S P E F S E X M I □
 I S X E R H □ I S I □ E □ S Y T T E R V K □ I □ G V V D S M P □ DLI □
 building was made fit for public events through temporary
 I EVV I VZ S M V K E □ M V S □ D X □ H M V R E P □ E O R K □
 ERH V M P □ E H □ I ER V K □ S DLI □ E □ G E M □ S R S Y M K S □
 trees, to earth flooring, to rangoli to the focus on 'borrowing
 ERH □ G G P K □ LI I □ I □ S V V P □ S G E P □ I I R G V Z I I □
 I □ T S V H □ L S Y K □ DLI □ B I K X B X H E T T R E X I R S □ S G E P □
 X □ CL R Y M V Z

LI □ M E K V Z S DLI □ B X V S □ ER V G I I R V E R I P M I E M I □
 E T T S E G L S □ E H V V V K □ DLI □ E Y M V K S □ DLI □ I R X V Z I M L □
 K E I □ DLI □ L S P □ E □ DLI □ C L E R G □ S □ V X E R H □ X □ R O S □ M V R E P □
 H V M R □ X R V S R V S □ DLI □ V G □ E X I R S □ DLI □ S Y W □ LI □
 H V M R □ X R V S R V S □ DLI □ S Y W □ E X □ LI □ R H S □ DLI □ T S G V V Z
 I I □ □ E M I I R X S □ S V W □ E X □ I □ K V R V K □ V E P □ DLI M V □
 V S □ R G I I R V E P □ CL R Y M □ S Y P H S X E I □ S V V P □ B I □ E □
 X E H V S R E P □ I M E K □ S I N G E M V M V R E I □ R E R H S □
 I V M R V S □ E I □ E M □ H S □ T E □ X O T E X □ DLI □ I □ S G V M E P □



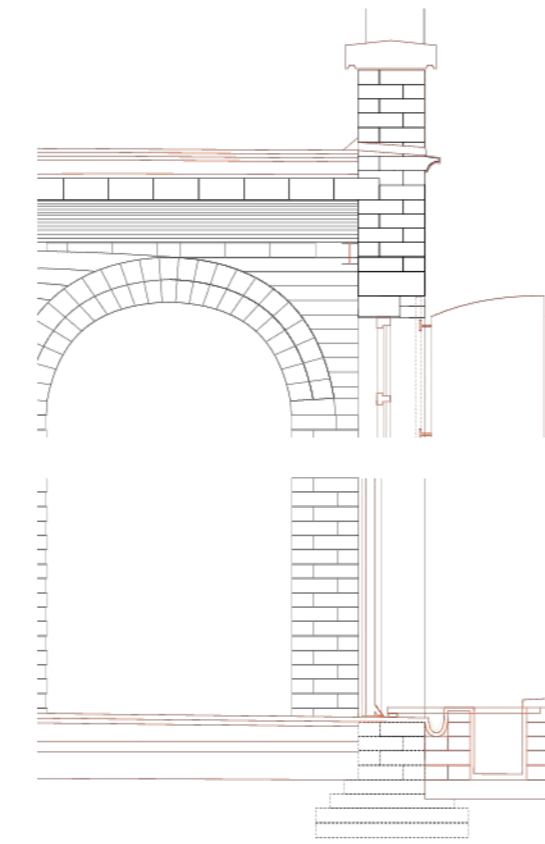
Before clean-up After clean-up Before clean-up After clean-up Pop-up museum

/ , □ □) | □ 3 □ 3 □ 6

6 ,) 0 □ + 6 (□ □ □ 6) □ □) 2 6) □ 3 6 □ 6 2 □ 2 (□ 6) + - 3 2 0 □) 0 0) 2) □ 1 (- □



Buksh Museum Event: First Floor Plan



Repair Strategy: First Floor Plan and Section



International support: facebook page managed by resident group



Citywide support: pop-up museum in local newspaper



Neighbourhood support: awards ceremony in the pop-up event

6) -2 + □□) | 40) □B 6□) □
 6) □□-2 / -2 + □B □) □-

Principle 4. Identify, disseminate and work alongside public programmes and sustainable socio-economic systems fostering social equity and urban inclusion within the built environment

The ground floor of the building will be given for community use and a café/shop to showcase local crafts. The upper floor, level floor of the building will be given for community use and a café/shop to showcase local crafts. The upper floor, level floor of the building will be given for community use and a café/shop to showcase local crafts.

This 'deal' is considered beneficial by the community as it provides a space for community use and a café/shop to showcase local crafts. The upper floor, level floor of the building will be given for community use and a café/shop to showcase local crafts.

The museum events drew press, city officials and tourism-industry representatives out of the office and into the neighbourhood. The event was a success and drew attention to the building and its history.

The event was a success and drew attention to the building and its history. It provided a space for community use and a café/shop to showcase local crafts. The upper floor, level floor of the building will be given for community use and a café/shop to showcase local crafts.

The event was a success and drew attention to the building and its history. It provided a space for community use and a café/shop to showcase local crafts. The upper floor, level floor of the building will be given for community use and a café/shop to showcase local crafts.

6 / , □□) | □□ □□3 □□6
 6 ,) 0□□ +6 (□□□ 6) □□) 2 6) □B 6□6 2 □2 (□□) + -3 2 0□) 00) 2) □□ (- □